

TEMP101A

TEMPERATURE DATA LOGGER



The Temp101A is the newest temperature data logger. It is part of a new series of low cost, state-of-the-art data logging devices. PTC® Instruments is proud to offer the most advanced, low cost, battery powered data loggers in the world today.

Features

- 10 Year Battery Life
- $\pm 0.5^{\circ}\text{C}$ ($\pm 0.9^{\circ}\text{F}$) Accuracy
- Multiple Start/Stop Function
- Ultra High Speed Download
- 1 Million Reading Storage Capacity
- Memory Wrap
- Precision RTD Sensing Element
- Battery Life Indicator
- Optional Password Protection
- Programmable High and Low Alarms
- N.I.S.T. Traceable
- Field Upgradeable

Benefits

- Simple Setup and Installation
- Minimal Long-Term Maintenance
- Long-Term Field Deployment

Applications

- Cold Chain
- Refrigerator and Freezer Monitoring
- Vaccine Monitoring
- Warehouse Mapping
- HVAC
- General Purpose Temperature Recording

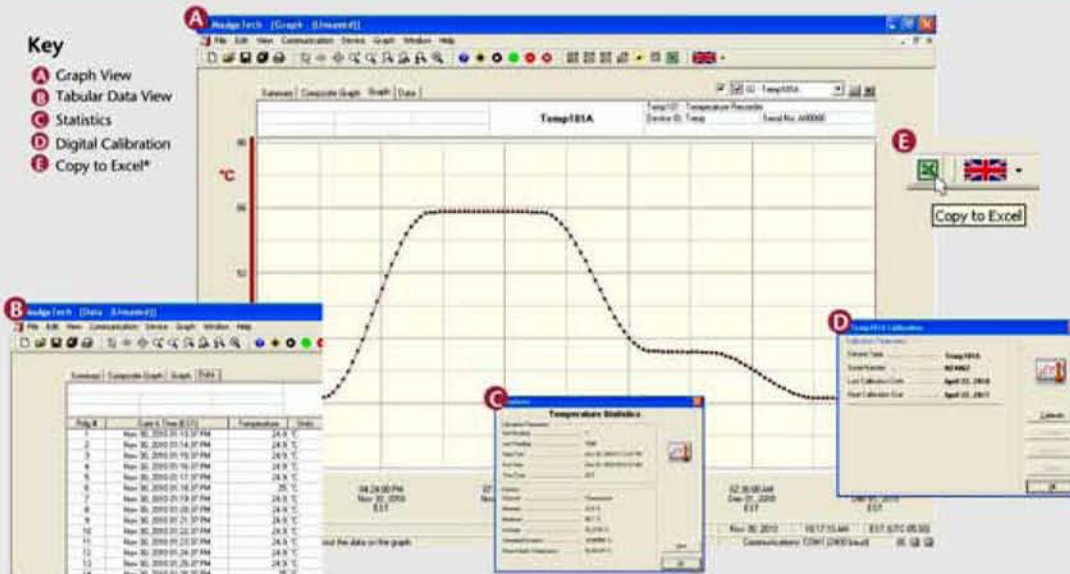
The Temp101A offers a 10 year battery life, a multiple start/stop function, ultra-high speed download capability, 1 million reading storage capacity, optional memory wrap, precision RTD sensing element, battery life indicator, optional password protection, programmable high-low alarms and more.

Using the new software, starting, stopping and downloading from the Temp101A is simple and easy. Graphical, tabular and summary data is provided for analysis and data can be viewed in $^{\circ}\text{C}$, $^{\circ}\text{F}$, K or $^{\circ}\text{R}$. The data can also be automatically exported to Excel® for further calculations.

DATA LOGGER SOFTWARE

Key

- A** Graph View
- B** Tabular Data View
- C** Statistics
- D** Digital Calibration
- E** Copy to Excel®



- ### Software Features:
- Multiple graph overlay
 - Statistics
 - Digital calibration
 - Zoom in/ zoom out
 - Lethality equations (F_0 , PU)
 - Mean Kinetic Temperature
 - Full time zone support
 - Data annotation
 - Min./Max./Average lines
 - Data table view
 - Automatic report generation
 - Summary view
 - Multilingual

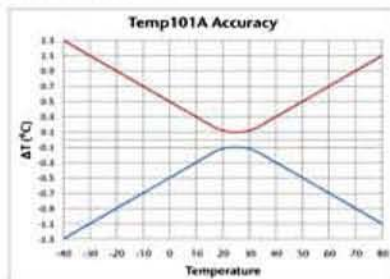
TEMP101A SPECIFICATIONS*

Temperature Sensor: Precision RTD Element

Temperature Range: -40°C to +80°C (-40°F to +176°F)

Temperature Resolution: 0.01°C (0.018°F)

Calibrated Accuracy: ±0.5°C (±0.9°F)



Reading Rate: 1 reading every second to 1 reading every 12 hours

Memory: 1,000,000 readings; software configurable memory wrap
330,000 readings in multiple start/stop mode

Wrap Around: Yes

Start Modes:

- Immediate start
- Delay start up to 18 months
- Multiple pushbutton start/stop

Multiple Start/Stop Mode: Start and stop the device multiple times without having to download data or communicate with a PC

Multiple Start/Stop Mode To start the device:

Activation: Press and hold the pushbutton for 5 seconds. The device has started logging.

To stop the device:

Press and hold the pushbutton for 5 seconds while the device is logging. The device has stopped logging.

Real Time Recording: The device may be used with PC to monitor and record data in real-time

Alarm: Programmable high and low limits; alarm is activated when temperature reaches or exceeds set limits

LED Functionality: Green LED blinks:

10 second rate to indicate logging
15 second rate to indicate delay start mode

Red LED blinks:

10 second rate to indicate low battery and/or full memory
1 second rate to indicate an alarm condition

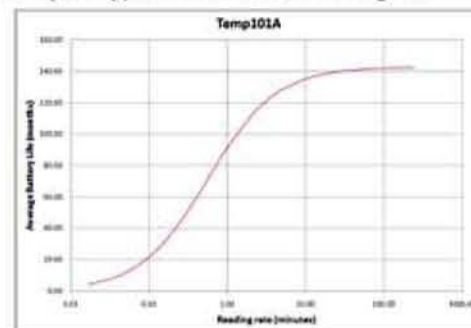
Password Protection: An optional password may be programmed into the device to restrict access to configuration options. Data may be read out without the password.

Calibration: Digital calibration through software

Calibration Date: Automatically recorded within device

Battery Type: 3.6V lithium battery included; user replaceable

Battery Life: 10 years typical at a 15 minute reading rate



Graph display of the device recording in a 25°C environment.

Data Format: Date and time stamped °C, °F, K, °R

Time Accuracy: ±1 minute/month (at 20°C/60°F, stand alone data logging)

Computer Interface: USB (interface cable required); 115,200 baud

Software: XP SP3/Vista/Windows 7

Operating Environment: -40°C to +80°C (-40°F to +176°F), 0%RH to 95%RH non-condensing

Dimensions: 1.4" x 2.2" x 0.6" (36mm x 56mm x 16mm)

Weight: 0.8 oz (24 g)

Materials: ABS Plastic

Approvals: CE

BATTERY WARNING: WARNING: FIRE, EXPLOSION, AND SEVERE BURN HAZARD. DO NOT SHORT CIRCUIT, CHARGE, FORCE OVER DISCHARGE, CRUSH, PENETRATE, OR INCINERATE. BATTERY MAY LEAK OR EXPLODE IF HEATED ABOVE 80°C (176°F).

*SPECIFICATIONS ARE SUBJECT TO CHANGE WITHOUT NOTICE. SPECIFIC WARRANTY REMEDY LIMITATIONS APPLY.

MODEL DESCRIPTION

TEMP101A	Temperature Data Logger
IFC200	Software, manual and USB interface cable

ASK ABOUT
OUR OTHER
DATA
LOGGERS

Temperature
Humidity
Pressure
pH
Level
Shock
LCD Display
Pulse/Event/State
Current
Voltage
Wireless
Intrinsically Safe
Spectral Vibration
Motion