

TCTEMP1000

RUGGED THERMOCOUPLE-BASED DATA LOGGER



Features

- Rugged
- Submersible
- N.I.S.T. Traceable
- Real-time Operation
- Low Cost
- Programmable Start Time
- Reusable
- User-friendly
- Memory Wrap

Benefits

- Simple Setup and Installation
- Minimal Long-Term Maintenance
- Long-Term Field Deployment

Applications

- Extreme Temperature Monitoring
- Warehouse Monitoring
- HVAC
- Medical and Pharmaceutical
- Well Monitoring
- Hostile Environment Monitoring
- Environmental Studies
- Implement HACCP Programs

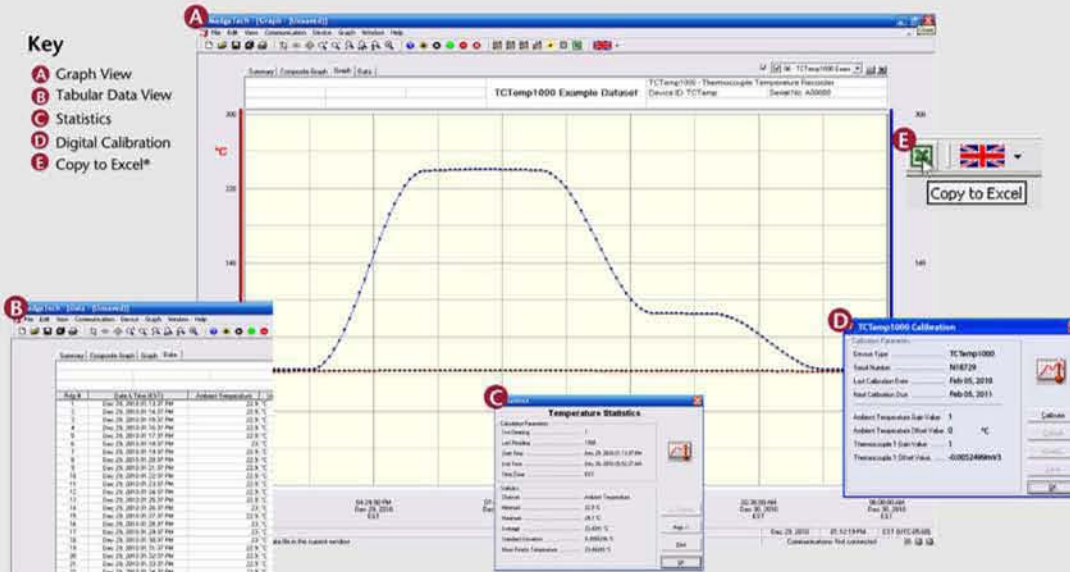


The TCTemp1000 is a rugged, submersible, battery powered, thermocouple based temperature recorder. This is a stand-alone, compact portable, easy to use device to measure and record up to 16,383 measurements per channel. The storage medium is non-volatile solid state memory, providing maximum data security even if the battery becomes discharged. Its real time clock ensures all data is time and date stamped. The TCTemp1000 makes data retrieval quick and easy even in harsh environment. Simply plug it into an empty COM or USB port and our user-friendly software does the rest.

DATA LOGGER SOFTWARE

Key

- A** Graph View
- B** Tabular Data View
- C** Statistics
- D** Digital Calibration
- E** Copy to Excel*



Software Features:

- Multiple graph overlay
- Statistics
- Digital calibration
- Zoom in/ zoom out
- Lethality equations (F_0 , PU)
- Mean Kinetic Temperature
- Full time zone support
- Data annotation
- Min./Max./Average lines
- Data table view
- Automatic report generation
- Summary view
- Multilingual

TCTEMP1000 SPECIFICATIONS*

Internal Channel

Temperature Range: -40 to +80°C

Temperature Resolution: 0.1°C

Calibrated Accuracy: ±0.5°C (0 to +50°C)

Remote Channel

Thermocouple Types: J, K, T, E, R, S, B, N

Thermocouple connection: Female subminiature (SMP)

Cold Junction Compensation: Automatic, based on internal channel

| **Thermocouple | Range (°C) | Resolution | Accuracy |
|----------------|---------------|------------|----------|
| J | -210 to +760 | 0.1 °C | ±0.5 °C |
| K | -260 to +1370 | 0.1 °C | ±0.5 °C |
| T | -260 to +400 | 0.1 °C | ±0.5 °C |
| E | -260 to +980 | 0.1 °C | ±0.5 °C |
| R | -50 to +1760 | 0.5 °C | ±2.0 °C |
| S | -50 to +1760 | 0.5 °C | ±2.0 °C |
| B | +60 to +1820 | 0.5 °C | ±2.0 °C |
| N | -260 to +1300 | 0.1 °C | ±0.5 °C |

**Thermocouple accuracy is specified with a 24 AWG, 3 meter thermocouple
Note: Rapidly changing temperatures or temperature gradients across the device may adversely affect the cold junction compensation.

*SPECIFICATIONS ARE SUBJECT TO CHANGE WITHOUT NOTICE. SPECIFIC WARRANTY REMEDY LIMITATIONS APPLY. CALL 1-603-456-2011 OR GO TO WWW.MADGETECH.COM FOR DETAILS.

Start Modes: Software programmable immediate start or delay start up to six months in advance

Real Time Recording: May be used with PC to monitor and record data in real time

Memory: 16,383 readings per channel; 32,766 total readings; software configurable memory wrap

Reading Rate: 1 reading every 2 seconds to 1 every 12 hours

Calibration: Digital calibration through software

Calibration Date: Automatically recorded within device

Battery Type: 3.6V lithium battery included, **user replaceable**

Battery Life: 1 year typical (1 minute reading rate at 25°C)

Data Format: Date and time stamped °C, °F, K, °R

Time Accuracy: ±1 minute/month (at 20°C, RS232 port not in use)

Computer Interface: PC serial or USB (interface cable required); 2,400 baud

Software: XP SP3/Vista/Windows 7

Operating Environment: -40 to +80°C, 0 to 100%RH; Submersible to 150 feet

Dimensions: 7.4" x 1.2" dia. (188mm x 31mm dia.)

Materials: 303 Stainless Steel

Weight: 13 oz (380 g)

BATTERY WARNING: WARNING: FIRE, EXPLOSION, AND SEVERE BURN HAZARD. DO NOT SHORT CIRCUIT, CHARGE, FORCE OVER DISCHARGE, CRUSH, PENETRATE, OR INCINERATE. BATTERY MAY LEAK OR EXPLODE IF HEATED ABOVE 80°C (176°F).

ORDERING INFORMATION

| MODEL | DESCRIPTION |
|------------|--|
| TCTEMP1000 | Rugged, Thermocouple-Based Recorder |
| IFC200 | Software, manual and USB interface cable |
| | N.I.S.T. Traceable Calibration Certificate |

PTC Metrology™ is accredited by A2LA to ISO/IEC 17025 and ANSI/NCSL Z5401 N.I.S.T. traceable certificate available. For information go to www.ptcmetrology.com
To order by phone, call toll free 1+ 877.782.2329 or email: sales@ptc1.com
Order on-line www.ptcinstruments.com or www.ptc1.com

ASK ABOUT
OUR OTHER
DATA
LOGGERS

Temperature
Humidity
Pressure
pH
Level
Shock
LCD Display
Pulse/Event/State
Current
Voltage
Wireless
Intrinsically Safe
Spectral Vibration
Motion