

# HITEMP150

## EXTENDED RANGE TEMPERATURE DATA LOGGER



### Features

- Extended temperature range
- Rugged
- Reusable
- Submersible
- Programmable start time
- Real-time operation
- N.I.S.T. traceable
- User-friendly
- Low cost

### Benefits

- Simple Setup and Installation
- Minimal Long-Term Maintenance
- Long-Term Field Deployment

### Applications

- Autoclave Verification
- Medical/Pharmaceutical
- Implement HACCP Programs
- Food preparation and processing
- Environmental studies
- Well monitoring
- Dishwasher testing
- Hostile environment monitoring

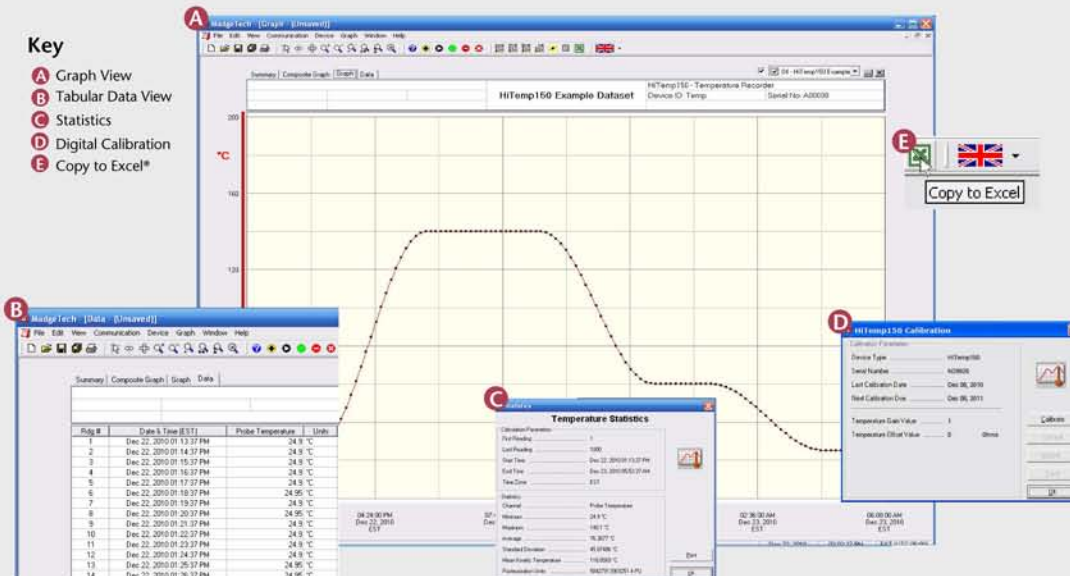


The HiTemp150 temperature logger is a rugged, submersible, battery powered, stand alone device which can be used to automatically record temperatures between  $-200$  and  $260^{\circ}\text{C}$ . This all in one compact, portable, easy to use device is able to measure and record up to 32,767 temperature measurements. The HiTemp150 features a 2" rigid external probe\* with fast response time to ensure accurate temperature readings and is ideal for use in harsh environments. Its real time clock ensures that all the data is time and date stamped. The storage medium is non-volatile solid state memory, providing maximum data security even if the battery becomes discharged. The device can be started and stopped directly from your computer and its small size allows it to fit almost anywhere. The HiTemp150 makes data retrieval quick and easy. Simply plug the device into an empty COM or USB port and our user-friendly software does the rest.

## DATA LOGGER SOFTWARE

### Key

- A** Graph View
- B** Tabular Data View
- C** Statistics
- D** Digital Calibration
- E** Copy to Excel\*



- ### Software Features:
- Multiple graph overlay
  - Statistics
  - Digital calibration
  - Zoom in/ zoom out
  - Lethality equations ( $F_0$ , PU)
  - Mean Kinetic Temperature
  - Full time zone support
  - Data annotation
  - Min./Max./Average lines
  - Data table view
  - Automatic report generation
  - Summary view
  - Multilingual

# HITEMP150 SPECIFICATIONS\*

**Temperature Sensor:** 100Ω Platinum RTD

**Probe Measurement Range:** -200 to +260°C

**Temperature Resolution:** 0.05°C

**Calibrated Accuracy:** ±0.5°C

**Start Modes:** Software programmable immediate start or delay start up to six months in advance

**Real Time Recording:** May be used with PC to monitor and record data in real time

**Memory:** 32,767 readings

**Reading Rate:** One second up to once every 12 hours.

**Battery Type:** 3.6V high-temperature lithium battery included

**Battery Life\*:** 1 year typical (1 minute reading rate @ 25°C)

\*The device must be sent back to MadgeTech for battery replacement.

**Calibration:** Digital calibration through software

**Calibration Date:** Automatically recorded within device

**Data Format:** Date and time stamped °C, °F, K, °R

**Time Accuracy:** ±1 minute/month at 20°C (RS232 cable not in use)

**Computer Interface:** PC serial or USB (Interface cable required); 2,400 baud

**Software:** XP SP3/Vista/Windows 7

**Operating Environment:** -40 to +150°C, 0 to 100%RH

**Dimensions (Body):** 1.1" x 1.75" dia. (28mm x 45mm dia.)

**Dimensions (Probe):** 2.0" x 3/16" dia. (50mm x 5mm dia.)

✧ *Other probes available*

**Weight:** 8 oz (225 g)

**Material** 316 Stainless Steel

**Approvals:** CE

**BATTERY WARNING:** WARNING: FIRE, EXPLOSION, AND SEVERE BURN HAZARD. DO NOT SHORT CIRCUIT, CHARGE, FORCE OVER DISCHARGE, CRUSH, PENETRATE, OR INCINERATE. BATTERY MAY LEAK OR EXPLODE IF HEATED ABOVE 150°C (302°F).

\*SPECIFICATIONS ARE SUBJECT TO CHANGE WITHOUT NOTICE. SPECIFIC WARRANTY REMEDY LIMITATIONS APPLY.

## ORDERING INFORMATION

MODEL	DESCRIPTION
HITEMP150	Extended Range Temperature Recorder
SVP –Secure	Protocols for validating the 21 CFR Part 11 ready, secure data logging system
IFC200	Software, manual and USB interface cable
	N.I.S.T. Traceable Calibration Certificate

PTC Metrology™ is accredited by A2LA to ISO/IEC 17025 and ANSI/NCSL Z5401 N.I.S.T. traceable certificate available. For information go to [www.ptcmetrology.com](http://www.ptcmetrology.com)  
 To order by phone, call toll free 1+ 877.782.2329 or email: [sales@ptc1.com](mailto:sales@ptc1.com)  
 Order on-line [www.ptcinstruments.com](http://www.ptcinstruments.com) or [www.ptc1.com](http://www.ptc1.com)

ASK ABOUT  
OUR OTHER  
DATA  
LOGGERS

Temperature  
Humidity  
Pressure  
pH  
Level  
Shock  
LCD Display  
Pulse/Event/State  
Current  
Voltage  
Wireless  
Intrinsically Safe  
Spectral Vibration  
Motion