



RFVOLT101A VOLTAGE DATA LOGGER & WIRELESS TRANSMITTER

Features

- Multiple transmitter configurations
- Memory wrap around
- Software configurable
- Real-time operation
- Programmable start time
- Miniature size
- User-friendly
- N.I.S.T. traceable

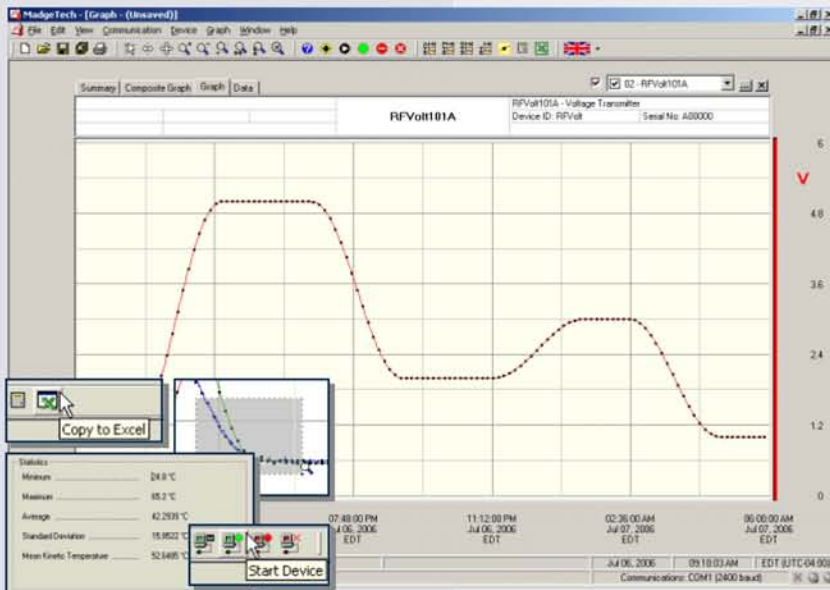
Applications

- Low level signal monitoring
- Medical and Pharmaceutical
- Battery studies
- Power supply monitoring
- Process plants
- Environmental studies
- Research and development
- Replace costly strip chart recorders



The RFVolt101A is a battery powered voltage recorder and wireless transmitter. This is an all-in-one compact, portable, easy to use device that will measure and record up to 8,191 measurements. The RFVolt101A combines the features from the standard product line and adds the convenience of a wireless transmitter. When enabled, the wireless transmitter will transmit readings back to the host computer where the data can be analyzed in real time. These readings are also logged to the device's memory for added data security. The convenient slide switch allows the transmitter to be turned on or off without affecting the operation of the device.

The device can be started, stopped and configured directly from your computer. Its small size allows it to fit almost anywhere. In addition to the wireless communications, the RFVolt101A makes data retrieval quick and easy. Simply plug the device into an empty COM port and our user-friendly software will handle the rest.



DATA LOGGER SOFTWARE

displays voltage data in an easy to use graph.

The Windows®-based software package allows the user to effortlessly collect, display and analyze data. A variety of powerful tools allow you to examine, export, and print professional looking data with just a click of the mouse.

RFVOLT101A SPECIFICATIONS*

Input Connection: Removable screw terminal

Model:	100mV	15V	30V
Voltage Range:	±100mV	-1.0 to +16.0V	-2.0 to +32.0V
Voltage Resolution:	5µV	0.5mV	1.0mV
Calibrated Accuracy:	±0.01 (%FSR)	±0.10 (%FSR)	±0.10 (%FSR)
Input Impedance:	>1kΩ**	>10kΩ	>10kΩ
Overload Protection:	±5V	±30V	±48V

Analog Conversion Time: 133ms

Frequency Rejection: 60Hz

Temperature Coefficient: <25ppm/°C; <10ppm/°C typical

Specified Accuracy Range: Nominal range @ 25°C

Engineering Units: User may define units up to 10 characters in length. This value is stored within the device.

Scale Factor: User may program any desired scaling factor from ±1.000E-31 to ±9.999E+31. The scaling factor is stored within the device.

Start Modes: Software programmable immediate start or delay start up to six months in advance

Memory: 8,191 readings; software configurable memory wrap

Reading Rate: 1 reading every 30 seconds to 1 every 12 hours

Calibration: Digital calibration through software

Data Format: Date and time stamped V, mV, µV, engineering units specified through software

Time Accuracy: ±1 minute/month (at 20 to 30°C)

Computer Interface: PC serial or RS232C COM (interface cable required); 57,600 baud

RF Carrier Frequency: 418 ± 0.075MHz

RF Baud Rate: 4,800 baud

Maximum Output Power: <0dBm typical (<1mW)

Receiver Sensitivity(RFC101A): -90dBm typical

Range: Line-of-sight: up to 120 ft., Urban: up to 40 ft.

Approvals: US (FCC), CA (IC)

Battery Type: 3.6V lithium battery included; **user replaceable**

Battery Life: 1 year typical (1 min reading rate @ 25°C)

Software: XP SP3/Vista/Windows 7

Operating Environment: -30 to +70°C, 0 to 95%RH non-condensing

Dimensions: 1.7" x 2.7" x 0.8" + 2.0" antenna
(42mm x 69mm x 21mm x 51mm)

Weight: 2 oz (60 g)

**Input impedance is greater than 1 MΩ during acquisition for the RFVOLT101A-100mV

BATTERY WARNING: FIRE, EXPLOSION, AND SEVERE BURN HAZARD. DO NOT RECHARGE, DISASSEMBLE, HEAT ABOVE 212°F, INCINERATE OR EXPOSE CONTENTS TO WATER.

SOFTWARE FEATURES

Multiple Graphs: Simultaneously analyze data from several units or deployments; easily switch to a single data series

Graphical Cursor: One click displays readings by time, value, parameter or sample number

Data Table: Instantly access tabular view for detailed dates, times, values, and annotations

Scaling Options: Autoscale function fits data to the screen, or allows user to manually enter their own values

Formatting Options: Change colors, line styles, plotting options, show or hide channels quickly

Statistics: Calculate averages, min, max, standard deviation, and mean kinetic temperature with the touch of a button

Export Data: Export data in a variety of common formats, or switch to Excel® with a single click

Calibration: Automatically calculate and store calibration parameters

Logger Configuration: Easy set up and launch of data loggers with immediate or delayed start, preferred sample rate, and device ID

Communications: Automatically sets up communications port, or lets user select configuration

*SPECIFICATIONS ARE SUBJECT TO CHANGE WITHOUT NOTICE. SPECIFIC WARRANTY AND REMEDY LIMITATIONS APPLY.

ORDERING INFORMATION

Model	Description
RFVOLT101A-100MV	±100mV Voltage Recorder and Wireless Transmitter
RFVOLT101A-15V	±15V Voltage Recorder and Wireless Transmitter
RFVOLT101A-30V	±30V Voltage Recorder and Wireless Transmitter
RFC200A	Software, manual, wireless receiver, power supply and USB interface cable
NIST	N.I.S.T. Calibration Certificate
LTC-7PN	Replacement battery for RFVOLT101A

ASK ABOUT OUR OTHER DATA RECORDERS

Temperature	Pulse/Event/State
Humidity	Low Level Current
Pressure	Low Level Voltage
pH	RF Transmitters
Level	Intrinsically Safe
Shock	Spectral Vibration
LCD Display	