



# PRTEMP101

## PRESSURE & TEMPERATURE DATA LOGGER

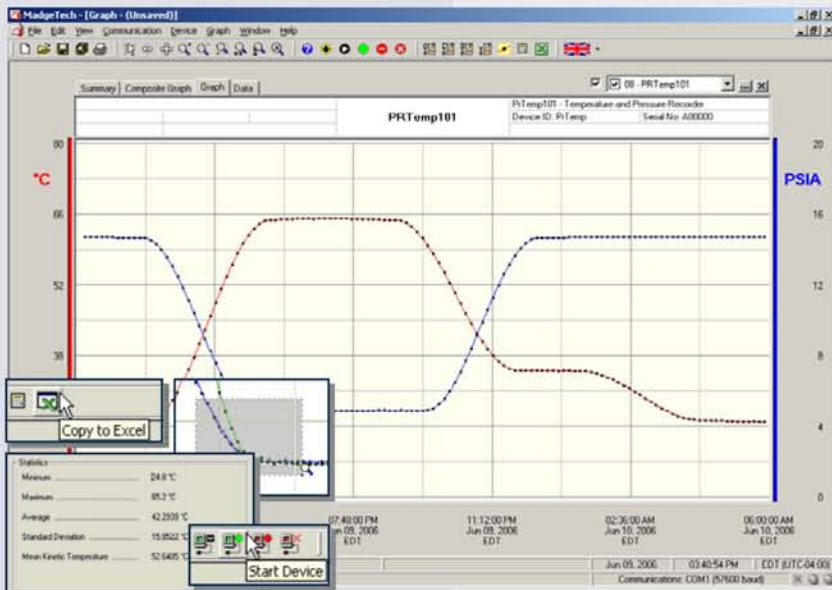
### Features

- N.I.S.T. traceable
- Real-time operation
- Low cost
- Programmable start time
- Reusable
- Miniature size
- User-friendly
- CE compliant

### Applications

- Shipping live cargo
- Barometry
- Altitude validation
- Food outgassing
- Warehouse monitoring
- Refrigeration
- Pneumatics
- Medical and Pharmaceutical
- Museum monitoring
- Environmental studies

The PRTemp101 is a miniature, battery powered, stand alone pressure and temperature recorder. This is an all-in-one compact, portable, easy to use device that will measure and record up to 8,191 measurements per channel. The storage medium is non-volatile solid state memory, providing maximum data security even if the battery becomes discharged. The device can be started and stopped directly from your computer and its small size allows it to fit almost anywhere. The PRTemp101 makes data retrieval quick and easy. Simply plug it into an empty COM or USB port and our user-friendly software does the rest.



### Data Recorder Software

displays pressure data in an easy to use graph.

The Windows®-based software package allows the user to effortlessly collect, display and analyze data. A variety of powerful tools allow you to examine, export, and print professional looking data with just a click of the mouse.

## PRTEMP101 SPECIFICATIONS\*

<b>Temperature Sensor:</b> Semiconductor	<b>Memory:</b> 8,191 readings per channel; 16,382 total readings
<b>Temperature Range:</b> -40 to +80°C	<b>Reading Rate:</b> 1 reading every 2 seconds to 1 every 12 hours
<b>Temperature Resolution:</b> 0.1°C	<b>Calibration:</b> Digital calibration through software
<b>Calibrated Accuracy:</b> ±0.5°C(0 to +50°C)	<b>Calibration Date:</b> Automatically recorded within device
<b>Pressure Sensor:</b> Semiconductor Strain Gauge	<b>Battery Type:</b> 3.6V lithium battery included; <b>user replaceable</b>
<b>Pressure Range:</b> 0 to 30PSIA	<b>Battery Life:</b> 1 year typical
<b>Pressure Resolution:</b> 0.002PSIA	<b>Data Format:</b> Date and time stamped °C, °F, K, °R ; PSIA, inHg, mmHg, bar, atm, Torr, Pa, kPa, MPa, altitude
<b>Calibrated Accuracy:</b> ±1.0%FSR at 25°C; ±0.2% typical	<b>Time Accuracy:</b> ±1 minute/month (at 20°C, RS232 port not in use)
<b>Pressure Response Time:</b> 0.1 ms (10% to 90% FSR)	<b>Computer Interface:</b> PC serial or USB (interface cable required); 2,400 baud
<b>Repeatability:</b> ±0.5 % FSR; ±0.2% typical	<b>Software:</b> XP SP3/Vista/Windows 7
<b>Start Modes:</b> Software programmable immediate start or delay start up to six months in advance	<b>Operating Environment:</b> -40 to +80°C, 0 to 95%RH non-condensing
<b>Real Time Recording:</b> May be used with PC to monitor and record data in real time	<b>Dimensions:</b> 1.4" x 2.2" x 0.9" (35mm x 56mm x 23mm)
	<b>Weight:</b> 1 oz (27 g)
	<b>Approvals:</b> CE, Approved for carriage on Delta® mainline flights

**BATTERY WARNING:** FIRE, EXPLOSION, AND SEVERE BURN HAZARD. DO NOT RECHARGE, DISASSEMBLE, HEAT ABOVE 212°F, INCINERATE OR EXPOSE CONTENTS TO WATER.

## SOFTWARE FEATURES

<b>Multiple Graphs:</b> Simultaneously analyze data from several units or deployments; easily switch to a single data series	<b>Statistics:</b> Calculate averages, min, max, standard deviation, and mean kinetic temperature with the touch of a button
<b>Real-Time Recording:</b> Collect and display data in real-time while continuing to log	<b>Export Data:</b> Export data in a variety of common formats, or switch to Excel® with a single click
<b>Graphical Cursor:</b> One click displays readings by time, value, parameter or sample number	<b>Calibration:</b> Automatically calculate and store calibration parameters
<b>Data Table:</b> Instantly access tabular view for detailed dates, times, values, and annotations	<b>Logger Configuration:</b> Easy set up and launch of data loggers with immediate or delayed start, preferred sample rate, and device ID
<b>Scaling Options:</b> Autoscale function fits data to the screen, or allows user to manually enter their own values	<b>Communications:</b> Automatically sets up communications port, or lets user select configuration
<b>Formatting Options:</b> Change colors, line styles, plotting options, show or hide channels quickly	<b>Printing:</b> Automatically print graphical or tabular data

\*SPECIFICATIONS ARE SUBJECT TO CHANGE WITHOUT NOTICE. SPECIFIC WARRANTY AND REMEDY LIMITATIONS APPLY.

## ORDERING INFORMATION

<u>Model</u>	<u>Description</u>
PRTEMP101	Pressure and Temperature Recorder
IFC200	Software, manual and USB interface cable
	N.I.S.T. Traceable Calibration Certificate

PTC Metrology™ is accredited by A2LA to ISO/IEC 17025 and ANSI/NCSL Z5401 N.I.S.T. traceable certificate available. For information go to [www.ptcmetrology.com](http://www.ptcmetrology.com)  
To order by phone, call toll free 1+ 877.782.2329 or email: [sales@ptc1.com](mailto:sales@ptc1.com)  
Order on-line [www.ptcinstruments.com](http://www.ptcinstruments.com) or [www.ptc1.com](http://www.ptc1.com)

### ASK ABOUT OUR OTHER DATA RECORDERS

Temperature	Pulse/Event/State
Humidity	Low Level Current
Pressure	Low Level Voltage
pH	RF Transmitters
Level	Intrinsically Safe
Shock	Spectral Vibration
LCD Display	