



# Time-Trak Time-Temperature Recorder



Model 616 Time-Trak  
Time-Temperature  
Recording Thermometer

- **Accurate Clock Movement with Jewelled Bearings**
- **Temperature Ranges From -40°F to +220°F (-40°C to +105°C)**
- **NIST Certification Available**
- **Accuracy of ±2% of Full Scale**
- **Inkless Scriber -- No Messy Ink**

Time-Trak Thermometers permanently record temperature versus time accurately and reliably. These portable, self-contained units feature a bimetallic sensing element and accurate clock movement for the ultimate in reliability. The charts are pressure sensitive and do not require ink markers which require refilling or replacement.

Fahrenheit Ranges	Time	Model No.
-40°F to +160°F	24-hour 7-day	616.1FB 616.7FB
-30°F to +70°F	24-hour 7-day	616.1FC 616.7FC
0°F to 100°F	24-hour 7-day	616.1FE 616.7FE
20°F to 120°F	24-hour 7-day	616.1FG 616.7FG
20°F to 220°F	24-hour 7-day	616.1FA 616.7FA

Celsius Ranges	Time	Model No.
-40°C to +70°C	24-hour 7-day	616.1CB 616.7CB
-35°C to +20°C	24-hour 7-day	616.1CC 616.7CC
-15°C to +40°C	24-hour 7-day	616.1CE 616.7CE
-5°C to +50°C	24-hour 7-day	616.1CG 616.7CG
-5°C to +105°C	24-hour 7-day	616.1CA 616.7CA

TOLL FREE: 877-782-2329  
OUTSIDE U.S.: 310-478-1134  
LOS ANGELES, CA 90064-1482

WEB: [HTTP://WWW.PTC1.COM](http://www.ptc1.com)  
E-MAIL: [SALES@PTC1.COM](mailto:SALES@PTC1.COM)  
FAX: 310-312-0826



The Model 616 is ideal whenever temperature monitoring is required. It is available in various temperature ranges and time periods. Applications include: transportation of perishable goods, walk-in freezers and refrigerators, shipping containers, cold rooms, dairies, drying sheds, greenhouses; and buildings such as hospitals, schools, and offices.

This thermometer uses a spring-wound chart drive and will operate in extreme temperatures (from -40°F to +240°F) where batteries fail. One full winding is enough to drive the chart well beyond its full recording range, whether 24-hour or 7-day.

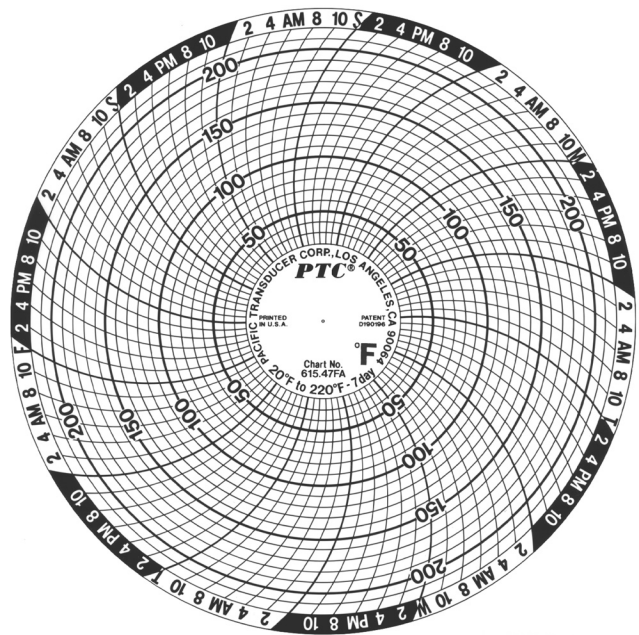
The clock motor has been electronically timed for accuracy and has been test run through its range to ensure reliability. Jewelled clock bearings for the escapement are standard on this unit.

The bimetal sensor is made of ASTM specified TM2 alloy, and will normally retain its calibration for the life of the instrument. The stainless steel stylus never needs sharpening or replacing. The 3-5/8 inch diameter paper charts are pressure sensitive and plastic coated in white. Time and temperature graduations are printed in blue. The stylus scribes a permanent temperature-time trace in black.

## SPECIFICATIONS

1. Accuracy ..... ±2% of full scale range.
2. Dimensions:
  - Diameter ..... 3-15/16" (10 cm).
  - Height ..... 3-1/2" (8.9 cm).
3. Chart Diameter ..... 3-5/8" (9.2 cm).
4. Weight..... 1.3 lb. (0.6 kg).
5. Shipping weight ..... 4 lb. (1.8 kg).
6. Finish ..... Anodized aluminum.
7. Accessory mounting bracket ..... P/N 585.84.

Note when used in an atmosphere where condensation might occur, the instrument must be enclosed in a polyethylene bag (see Part No. 585.86).



20°F to 220°F - 7-Day Chart

## Other PTC® Temperature Recorders

### In-Transit Temperature

Paper strip recorder, 5 to 90 day models, ranges -40°F to +150°F (most charts are dual °F & °C).



### Data Logger

Digitally record time, temperature, humidity, pressure. Compact size only 0.6" x 1.4" x 2.15".



### Temp Plate®

Temperature recording decals with ranges from 100°F to 490°F. Size: 3/4" x 1.75".



### Model 618 Oven Recorder

Time-Temperature chart recorder with ranges from 70°F to 500°F (20°C to 260°C)



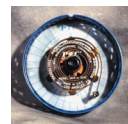
### 14000 Series Recorders

Records temperature & humidity on Ø6.6" plain paper chart from 14°F to 104°F & 0 to 100% RH



### Model 581

Max-Min chart recorder with ranges of -50°F to +250°F and -50°C to +110°C..



PTC Metrology® is accredited by A2LA for temperature and durometer calibration to ISO/IEC 17025 & ANSI/ NCSL Z540-1. Certifications are NIST traceable. Visit our website at [www.ptc1.com](http://www.ptc1.com) to see our services and copies of our A2LA Certificate and Scope.



TOLL FREE: 877-782-2329  
 OUTSIDE U.S.: 310-478-1134  
 LOS ANGELES, CA 90064-1482

WEB: [HTTP://WWW.PTC1.COM](http://www.ptc1.com)  
 E-MAIL: [SALES@PTC1.COM](mailto:SALES@PTC1.COM)  
 FAX: 310-312-0826